

# Feline Panleukopenia Ag

## Rapid detection test



### Rapid FPV Testing

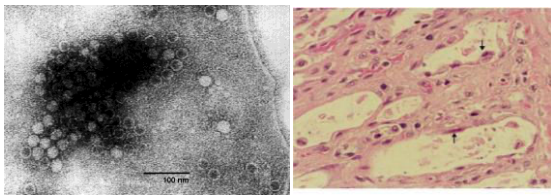
- Quick results available in just a few minutes.
- Require no instrumentation.
- Easy to use.
- Kennel side/Point of Care test
- No capital expenditure.
- Do not require refrigerated storage..

### Why FPV Antigen Test?

- Differential diagnosis of Diarrhoea: implementation of strict isolation and disinfection measures.
- Infection Control in Kennels and group boarding.
- Vigilance programs and epidemiological studies.
- Detect virus within 3 days post infection.
- Can be used for Prognostic purpose during treatment

**One step Rapid Immuno-chromatographic test for the detection of Feline Parvovirus Antigen in Feces.**

Feline panleukopenia virus (FPV), is a viral infection affecting cats, both domesticated and wild feline species. It is caused by feline parvovirus, a close relative of both type 2 canine parvovirus and mink enteritis. Once contracted, it is highly contagious and can be fatal to the affected cat. The disease is highly contagious and is spread from cat to cat by direct or indirect contact with their feces. The clinical symptoms appear usually 7-10 days post infection. The virus primarily attacks the lining of the gastrointestinal tract, causing internal ulceration and, ultimately, total sloughing of the intestinal epithelium. This results in profuse and usually bloody diarrhea, severe dehydration, malnutrition, anemia, and often death. It causes a decrease in the cat's white blood cells, thus compromising its immune system. Typically, it also causes a decrease in hematocrit and platelet counts on a complete blood count. This is often key in diagnosing panleukopenia. Feline panleukopenia requires aggressive treatment if the cat is to survive, as this disease can kill cats in less than 24 hours



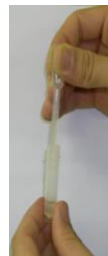
quickVET FPV Antigen Rapid Test utilizes Monoclonal anti FPV antibody to capture the antigen present in the feces. The captured viral antigens are detected using colloidal gold conjugated detection antibody.

### Assay Overview

- quickVET FPV Ag a test uses two Highly specific Monoclonal antibodies
- The Virus in the sample react with colloidal gold conjugated detection antibody on conjugate pad
- This labelled antigen-antibody complex is captured by the test area forming a red line.

<b>Organism detected</b>	<b>Feline Parvo Virus</b>
<b>Sample type</b>	<b>Feces</b>
<b>Shelf Life</b>	<b>24 months</b>
<b>Storage</b>	<b>2-30 °C</b>
<b>Capture Antibody</b>	<b>Monoclonal Anti-FPV Antibodies</b>
<b>Sensitivity</b>	<b>99.5%</b>
<b>Specificity</b>	<b>98.5%</b>
<b>Comparison Test</b>	<b>HA</b>
<b>Detection Limit</b>	<b>0.5 HAU</b>
<b>Species</b>	<b>Canine</b>
<b>Packing</b>	<b>1T,10T, Bulk, Uncut sheets</b>
<b>Ref. No</b>	<b>Q049-01</b>
<b>Cross Reactivity</b>	<b>No Cross Reactivity with FeCV.</b>

### Test Procedure



Positive



Negative



Invalid

### Test Interpretation

Feces Collection

Collect suspension

3 drop to device